

## SPINNEY HILLS COMMUNITY MEETING

TUESDAY, 10 DECEMBER 2019

Held at: Pakistan Youth & Community Association, 58 Earl Howe St, Leicester,  
LE2 0DF

### ACTION LOG

Present:  
Councillor Malik (Chair)  
Councillor Batool

<b><u>NO.</u></b>	<b><u>ITEM</u></b>	<b><u>ACTION REQUESTED AT MEETING</u></b>
9.	<b>INTRODUCTION</b>	Councillor Malik as chair led on introductions.
10.	<b>APOLOGIES FOR ABSENCE</b>	Apologies were received from Darren Evans the City Warden.
11.	<b>DECLARATIONS OF INTEREST</b>	There were no declarations of interest.
12.	<b>ACTION LOG OF THE PREVIOUS MEETING</b>	The action log of the of the previous meeting held on Tuesday 3 September 2019 was noted.
13.	<b>WARD COUNCILLORS FEEDBACK</b>	<p>Councillors were working on independent casework loads from constituents and work referred to by other Councillors.</p> <p>Councillors were working alongside the Police with issues around drugs and anti-social behaviour (ASB) at hotspots across the ward.</p> <p>Work was still on-going with issues around the Gwendolen Road area and solutions to the issues were being sought.</p>
14.	<b>POLICE UPDATE</b>	<p>Sergeant Chris Richardson from the local policing unit was in attendance and provided a feedback to the meeting.</p> <p>It was noted that although the police were aware of hotspots across the ward, no reports had been received. Officers were currently working with the Crime and Anti-Social Behaviour Unit (CrASBu) to tackle issues but requested if residents were able to share information, this would help deal with matters.</p> <p>The Councillors were concerned with the BT</p>

		<p>telephone box on Earl Howe Street and reported it was being used for drug related matters. Sergeant Richardson informed the meeting that BT were responsible for removing the telephone boxes. The police were able to take enforcement action but would need local residents support to do so.</p> <p>Robberies that had taken place on Spinney Hill Park involving knives had been resolved with suspects being charged. Following this there had been no repeat incidents. It was noted that other safety precautions such as, lighting and CCTV were being considered.</p> <p>In relation to knife crime, operation New Tronic was in place. It was noted that the Police were taking different levels of approaches to deal with these matters. The Police were working with schools and colleges to have an educational approach for young people being drawn into knife crime, whereas habitual knife carriers were being caught and convicted in an attempt to direct them away from criminality.</p> <p>Police statistics can be broken down into local wards and Councillors requested that the police provide these statistics at future meetings. <b>ACTION:</b> The Police to provide quarterly reports to for the local ward to future community meetings.</p> <p>The Police had been working with local community groups and continue to do so. It was noted that the police were building trust and relations with local parents who were concerned with children but were reluctant on reporting. The police were keen on helping prevent and diverting young people away from criminality. The Police were aware that the local area consisted of predominantly BAME communities and at times there were language barriers. Spinney Hills Police station had many officers from different backgrounds and were confident they would be able to develop the trust and authority required.</p> <p>Councillors suggested that working in confidence with local parents and changing terminology can help change people's attitudes towards the Police.</p>
15.	<b>LOCAL HIGHWAYS UPDATE</b>	<p>Rupert Bedder the Highways Network Asset Manager was in attendance and provided an update.</p> <p>Residents in attendance shared their concerns with the parking problems on Melbourne Road. Local</p>

Councillors along with the Officers and residents discussed the options available, suggestions for pavement parking along safe parts of Melbourne Road where the footpath was wide enough were suggested by residents. The Ward Councillors agreed they would like to see a follow up on pavement parking.

Residents also suggested that some parts of Melbourne Road need to be reviewed where double yellow lines have been painted.

Residents shared their concerns on disabled parking bays being abused. The Highways Officer informed the meeting that the regulations were up for review and amendments were pending in the near future. The existing free service would now come with a cost.

It was noted that following the last community meeting, the highways team had prepared a consultation on proposed one-way traffic flow for the Gwendolen Road area. The consultation would comprise of traffic calming measures and a proposed 20mph zone. Residents were informed that the consultation would be sent to everyone in the affected area and any works carried out would depend on the consultation results. Any works that would be carried out would be carried out in the next financial year.

It was noted that residents concern of selling cars on public footpaths was an issue that needed to be raised with the City Wardens Team. **ACTION:** Ward Community Engagement Officer to contact the City Warden.

Resident concerns with parking and noise from The Venue on Gwendolen Road were issues that needed to be raised with the Environmental Noise Team. Residents were assured that the Parking Enforcement Officers regularly attended the area with 125 visits and issued 41 parking tickets. **ACTION:** The Ward Community Engagement Officer to contact the Environmental Noise Team.

Councillors were concerned with the road layout and traffic flow on the corner of Earl Howe Street and Kings Newton Street. With cars coming from all directions Councillors suggested that this be reviewed to ensure free flow of traffic.

		Resident concerns of trees that needed pruning on Melbourne Road were noted and Councillors suggested Officers contacted the correct department. <b>ACTION:</b> Ward Community Engagement Officer to contact Trees and Woodlands Team.
16.	<b>HOUSING UPDATE</b>	<p>Jay Rughani the Neighbourhood Housing Team Leader was in attendance and provided an update.</p> <p>It was noted that there were scattered Council properties across the Spinney Hills Ward. There was a concentration of Council properties on Gwendolen Road and Wakerley Road, these properties were currently being renovated.</p> <p>It was noted that there were a number of influences that determined the waiting time on the list for Council Housing. With the Spinney Hills area being a more popular and sought-after location, the waiting time was considerably longer.</p> <p>It was also noted that the City Council had set up a housing company to buy housing stock and increase the councils stock of properties.</p>
17.	<b>CITY WARDEN UPDATE</b>	Darren Evans the City Warden for the ward was not in attendance.
18.	<b>LEICESTER CLIMATE EMERGENCY CONVERSATION</b>	<p>The Project Manager for the Climate Emergency was in attendance and delivered a presentation (attached for information).</p> <p>The consultation had been launched and was in progress until the 9 February 2020. An event, Leicester's Climate Assembly will be held on 18 January 2020 and The Young Peoples Climate Assembly will be held on 27 January 2020. Groups could also request a conversation pack where they can conduct their own assembly workshops.</p>
19.	<b>WARD COMMUNITY BUDGET</b>	<p>The Ward Community Engagement Officer updated the meeting.</p> <p>It was noted that following the last ward meeting 11 applications had been received, of which 5 had been supported and 5 that were not supported. There was one application that was still being considered.</p> <p>The closing budget to date was £8,642.00</p>
20.	<b>ANY OTHER BUSINESS</b>	There being no items of urgent business, the meeting closed at 19:49

# Minute Item 18



## Leicester's Climate Emergency Conversation

This briefing note explains what the climate emergency is and how the public can have their say by taking part in the Climate Emergency Conversation.

### What is the climate emergency?

Human activity produces greenhouse gases, particularly carbon dioxide. These gases cause climate change, raising the average temperature of the world. This is already causing extreme weather, sea level rise and damage to nature. If we don't take urgent action, these impacts will get much worse in the future.

### What are we doing about it?

Leicester City Council has been taking steps to tackle climate change for a number of years and we are on track for the city's carbon emissions to halve by 2025. However, it has become clear that we need to go a lot further than this. We need to redouble our efforts and encourage others across the city to take action too.

For this reason Leicester City Council declared a Climate Emergency on 1<sup>st</sup> February 2019. Since then over half of other UK councils have now done likewise.

Declaring a climate emergency means we are prepared to play our part. Alongside other cities around the world, we are committed to taking the action needed to prevent climate change becoming much worse.

We are also developing a vision for how Leicester will need to change, alongside new actions and a target for the city to become 'carbon neutral'. This will need coordinated and shared action from us, the public and the UK government.

### Join the conversation

Responding to the climate emergency will mean making big changes to the way we all live and work. We want to make sure that everyone in Leicester can have their say on how the council and the wider city should respond and how it will affect them. We are running Leicester's Climate Emergency Conversation from 18<sup>th</sup> November 2019 to 9<sup>th</sup> February 2020 for you to have your say.

Through the conversation, the council is seeking to gain the views of the widest possible range of people and organisations in the city. This is made possible by the availability of a selection of channels which combine traditional consultation methods with more innovative approaches, as summarised below:

**Online questionnaire** Available throughout the conversation period (18<sup>th</sup> November 2019 – 9<sup>th</sup> February 2020) on the council's [Consultation Hub](#) on our website: Leicester.gov.uk

**Community discussions** A conversation pack is available throughout the conversation period for any group of people wanting to run their own discussion



## Leicester's Climate Emergency Conversation

event and to feed back the results. The pack is available by emailing [sustainability@leicester.gov.uk](mailto:sustainability@leicester.gov.uk)

**Leicester's Climate Assembly** A one-day workshop event on Saturday 18<sup>th</sup> January 2020 run in partnership with the RSA. The event is designed to find out the views of a cross-section of Leicester's population. It will help people to learn more about the climate emergency and our proposals, and to share their views directly. Anyone interested in applying to take part should email [sustainability@leicester.gov.uk](mailto:sustainability@leicester.gov.uk).

**Young People's Climate Assembly** A one-day workshop event on Monday 27<sup>th</sup> January 2020 for city secondary schools, supported by Leicester's Youth Council. Schools interested in taking part should contact Lee Jowett, Environmental Education Co-ordinator at the council. Email [lee.jowett@leicester.gov.uk](mailto:lee.jowett@leicester.gov.uk)

**Dialogue** The council's online moderated forum will open for discussion of a series of climate emergency 'challenges' starting on Monday 16<sup>th</sup> December. In addition to challenges posted by the council, participants can post their own ideas for comment.

Contact us if you need to discuss or acquire more information on the climate emergency conversation process using the following email addresses:

[sustainability@leicester.gov.uk](mailto:sustainability@leicester.gov.uk)

OR

[Steven.Tuitt@leicester.gov.uk](mailto:Steven.Tuitt@leicester.gov.uk)

Estates and Building Services

Leicester City Council

Phoenix House

1 King Street

Leicester LE1 6RN

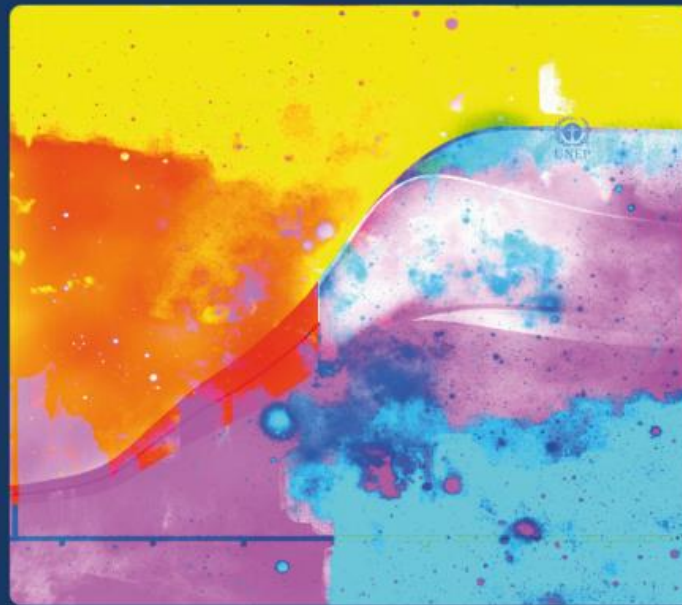
Tel No: (0116) 454 4336



# Leicester's Climate Emergency Conversation

# Global Warming of 1.5°C


An IPCC special report on the impacts of global warming of 1.5°C above pre-industrial levels and related global greenhouse gas emission pathways, in the context of strengthening the global response to the threat of climate change, sustainable development, and efforts to eradicate poverty.






# Leicester's Climate Emergency Declaration

RECORD OF DECISION BY CITY MAYOR OR INDIVIDUAL EXECUTIVE MEMBER

1.	DECISION TITLE	Declaration of Climate Emergency
2.	DECLARATIONS OF INTEREST	None
3.	DATE OF DECISION	1 February 2019
4.	DECISION MAKER	Deputy City Mayor, Environment, Public Health and Health Integration
5.	DECISION TAKEN	(1) Declare a Climate Emergency for the city. (2) Address this state of emergency by developing a new programme of action to reduce greenhouse gas emissions and prepare for a changing climate in the next Sustainability Action Plan for the city. (3) Commission a review and updating of the council's climate change targets, in light of the Climate Emergency.
6.	REASON FOR DECISION	The Intergovernmental Panel on Climate Change (IPCC) produced a special report in October 2018 which estimates that there are only 12 years left to act decisively on climate change, to be able to keep global warming within 1.5°C. Leicester City Council is declaring a Climate Emergency in response to this, to further reduce carbon emissions in the city, to address climate change.
7.	a) KEY DECISION Y/N? b) If yes, was it published 5 clear days in advance? y/n	No
8.	OPTIONS CONSIDERED	Not to declare a Climate Emergency.
9.	DEADLINE FOR CALL-IN • 5 Members of a Scrutiny Commission or any 5 Councillors can ask for the decision to be called-in. • Notification of Call-in with reasons must be made to the Monitoring Officer	8 February 2019
10.	SIGNATURE OF DECISION MAKER (City Mayor or where delegated by the City Mayor, name of Executive Member)	

 City Mayor

(1) Declare a Climate Emergency for the city.

(2) Address this state of emergency by developing a new programme of action to reduce greenhouse gas emissions and prepare for a changing climate in the next Sustainability Action Plan for the city.

(3) Commission a review and updating of the council's climate change targets, in light of the Climate Emergency.

# Progress and Achievements to date

Leicester's city-wide footprint 45% ↓



# Leicester's Climate Emergency Conversation

---

12 week consultation until 9<sup>th</sup> February 2020

- Online questionnaire on Consultation Hub
- Conversation pack for Community Discussions
- Dialogue forum – from 16<sup>th</sup> December
- Presentations at Ward meetings – ongoing
- Leicester's Climate Assembly – 18<sup>th</sup> January
- Young Peoples' Climate Assembly – 27<sup>th</sup> January

